



Electrolux
PROFESSIONAL

**Modular Cooking Range Line
thermaline 80 - 800 mm Electric
Warming Cabinet with 2 doors, GN
conform, 1 Side (H2) - H=450**

ITEM # _____

MODEL # _____

NAME # _____

SIS # _____

AIA # _____



588307 (MA4HCAHOAO)

Electric Warming Cabinet,
with 2 doors, one-side
operated, GN - H2

Short Form Specification

Item No. _____

800 mm wide warming cabinet with 2 doors. Internal frame for heavy duty sturdiness in stainless steel. Flat surface construction, easily cleanable. Temperature in the cabinet can be set through thermostat, up to a maximum of 110 °C. Cabinet storage space accepts GN 1/1 containers.

IPX5 water resistant certification.

Configuration: One-side operated freestanding base, hygienic class H2.

Main Features

- All major components may be easily accessed from the front.
- THERMODUL connection system creates a seamless work top when units are connected to each other thus avoiding soil penetrating vital components and facilitating the removal of units in case of replacement or service.
- Unit constructed according to DIN 18860_2 with 70 mm recessed plinth.
- Temperature in the cupboard can be set through a thermostat to suit different requirements. The maximum temperature is 110° C.
- Unit can be installed below modular top appliances, designed to keep plates warm.

Construction

- IPX5 water resistance certification.
- 2 mm top in 1.4301 (AISI 304).
- Flat surface construction with minimal hidden areas to easily clean all surfaces
- Storage space in the base of the appliance accepts GN1/1 containers.
- Internal frame for heavy duty sturdiness in stainless steel.

Optional Accessories

- Stainless steel side panel, 800x700mm, freestanding PNC 912509 ☐
- Stainless steel front kicking strip, 800mm width PNC 912634 ☐
- Stainless steel side kicking strip left and right, freestanding, 800mm width PNC 912655 ☐
- Stainless steel side kicking strip left and right, against the wall, 800mm width PNC 912658 ☐
- Stainless steel side kicking strip left and right, back-to-back, 1610mm width PNC 912661 ☐
- Stainless steel plinth, against wall, 800mm width PNC 912844 ☐
- Stainless steel plinth, freestanding, 800mm width PNC 912863 ☐
- Stainless steel panel, 800x700mm, against wall, left side PNC 913093 ☐
- Stainless steel panel, 800x700mm, against the wall, right side PNC 913097 ☐
- Back panel, 800x450mm, for bases one-side operated PNC 913167 ☐
- Stainless steel side panel, left, H=700 PNC 913214 ☐
- Stainless steel side panel, right, H=700 PNC 913215 ☐

APPROVAL: _____



Experience the Excellence
www.electroluxprofessional.com

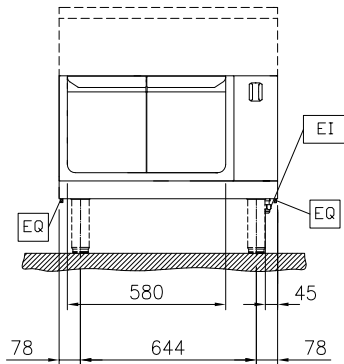
- | | | |
|--|------------|--------------------------|
| • Perforated shelf for warming cabinets and cupboard bases (one-side operated TL80-85-90 and two-side operated for TL80) | PNC 913234 | <input type="checkbox"/> |
| • Energy optimizer kit 14A - factory fitted | PNC 913244 | <input type="checkbox"/> |
| • Side reinforced panel only in combination with side shelf, for freestanding units | PNC 913258 | <input type="checkbox"/> |
| • Side reinforced panel only in combination with side shelf, for against the wall installations, left | PNC 913263 | <input type="checkbox"/> |
| • Side reinforced panel only in combination with side shelf, for against the wall installations, right | PNC 913265 | <input type="checkbox"/> |
| • Side reinforced panel only in combination with side shelf, for back-to-back installations, left | PNC 913271 | <input type="checkbox"/> |
| • Side reinforced panel only in combination with side shelf, for back-to-back installation, right | PNC 913272 | <input type="checkbox"/> |
| • Shelf fixation for TL80-85-90 one-side operated, TL80 two-side operated | PNC 913281 | <input type="checkbox"/> |



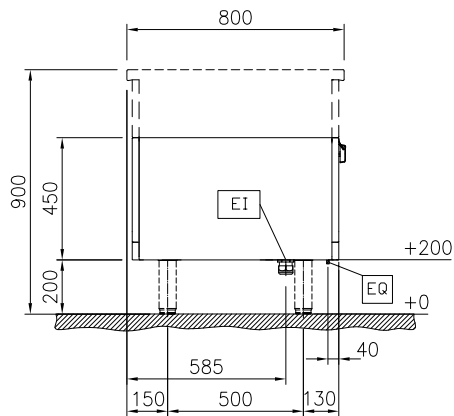
Electrolux
PROFESSIONAL

Modular Cooking Range Line
thermaline 80 - 800 mm Electric Warming
Cabinet with 2 doors, GN conform, 1 Side (H2) -
H=450

Front

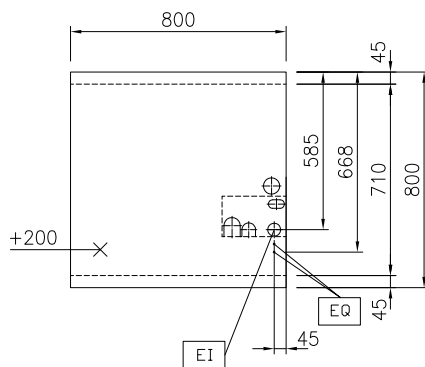


Side



EI = Electrical inlet (power)

Top



Key Information:

External dimensions, Width:

588307 (MA4HCAHOAO) 800 mm

External dimensions, Depth: 800 mm

External dimensions, Height: 450 mm

Cupboard Cavity Dimensions (width): 580 mm

Cupboard Cavity Dimensions (height): 330 mm

Cupboard Cavity Dimensions (depth): 715 mm

Cabinet temperature range: 30-110 °C

Net weight: 28 kg

Sustainability

Current consumption: 5 Amps



Modular Cooking Range Line
thermaline 80 - 800 mm Electric Warming Cabinet with 2 doors, GN
conform, 1 Side (H2) - H=450
The company reserves the right to make modifications to the products
without prior notice. All information correct at time of printing.

2025.05.26